

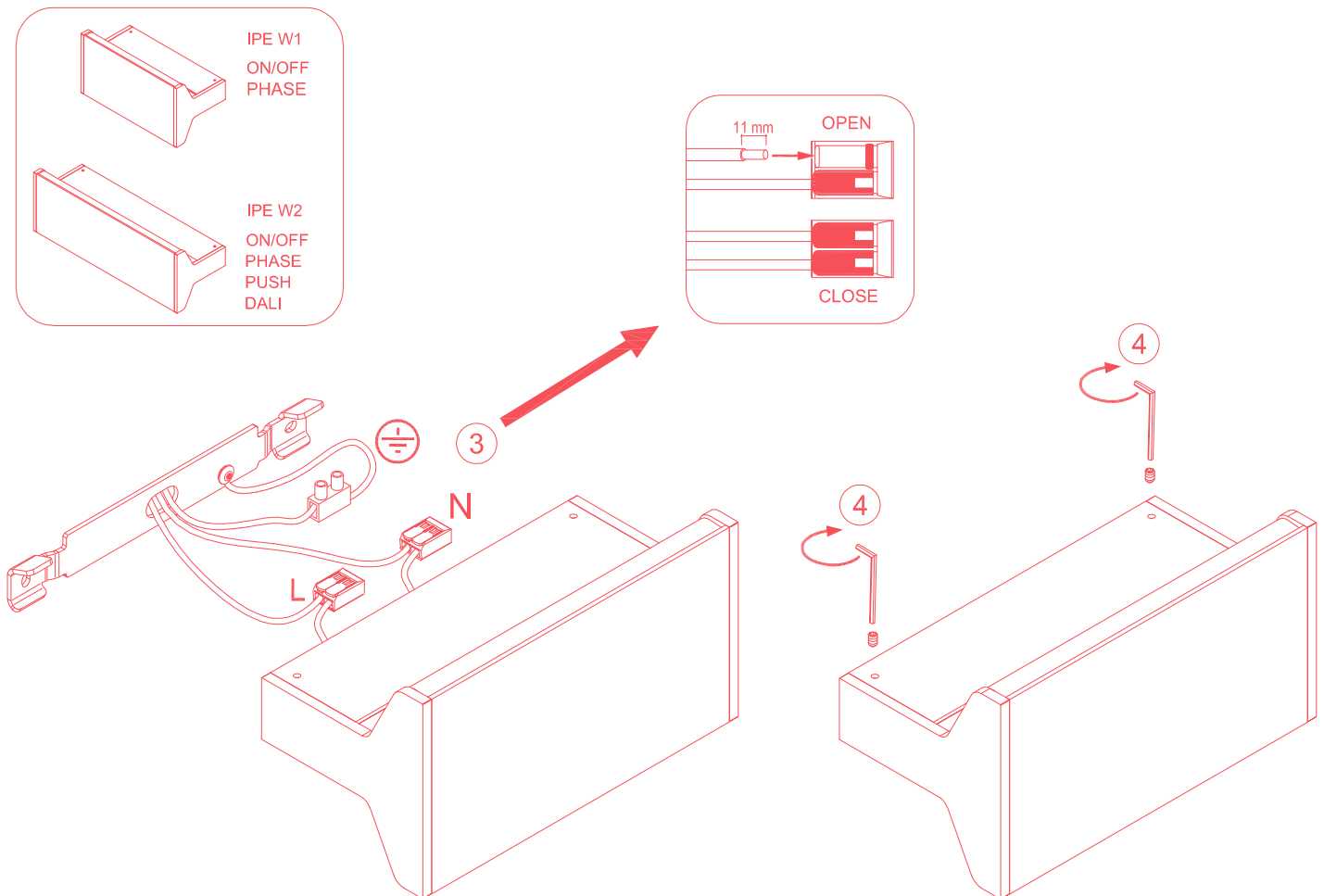
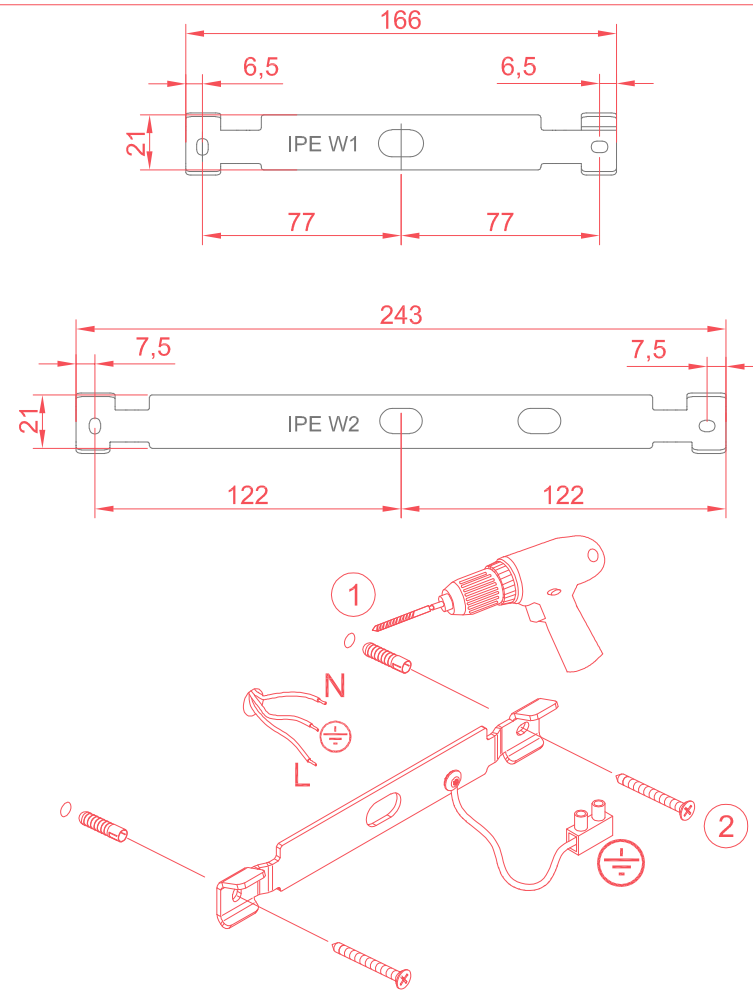
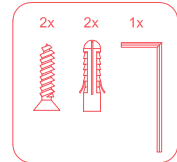
AVVERTENZE:
 Dimmerazione IPE W1 & IPE W2 fase:
 E' sconsigliata la dimmerazione di apparecchi IPE W1 e IPE W2 sulla stessa linea elettrica.
 Utilizzare circuiti indipendenti con relativo dimmer per l'alimentazione di soli apparecchi IPE W1
 Utilizzare circuiti indipendenti con relativo dimmer per l'alimentazione di soli apparecchi IPE W2.

NOTICE:
 Dimming of IPE W1 and IPE W2 - Phase:
 It is not recommended to dim the IPE W1 and IPE W2 units on the same power supply line.
 Use independent circuits with related dimmers for powering IPE W1 units alone.
 Use independent circuits with related dimmers for powering IPE W2 units alone.

INSTRUCTIONS:
 Variation de lumière du IPE W1 et du IPE W2 - Phase:
 Il est déconseillé de prévoir la variation d'éclairage d'appareils IPE W1 et IPE W2 à partir de la même ligne électrique.
 Il faut utiliser des circuits indépendants, avec leur variateur de lumière respectif, pour l'alimentation d'appareils IPE W1 uniquement
 Il faut utiliser des circuits indépendants, avec leur variateur de lumière respectif, pour l'alimentation d'appareils IPE W2 uniquement.

WARNINWEISE:
 Dimmen von IPE W1 und IPE W2 - Phase:
 Vom Dimmen von Geräten IPE W1 und IPE W2 auf der gleichen Stromleitung wird abgeraten.
 Unabhängige Stromkreise mit entsprechendem Dimmer verwenden, um nur Geräte IPE W1 mit Strom zu versorgen.
 Unabhängige Stromkreise mit entsprechendem Dimmer verwenden, um nur Geräte IPE W2 mit Strom zu versorgen.

incluso / included



PHASE

FOR IPE W1 e W2

IT: La lampada è fornita con il seguente alimentatore elettronico a taglio di fase: **ROAL EFORE RSLM - 30A**
 EN: The lamp is supplied with the following phase-cutting electronic transformer: **ROAL EFORE RSLM - 30A**



Per la regolazione dell'intensità luminosa si devono utilizzare DIMMER LED a taglio di fase **funzionanti sul fronte di discesa (trailing edge T.E.)**. Si consiglia di utilizzare uno dei seguenti moduli:

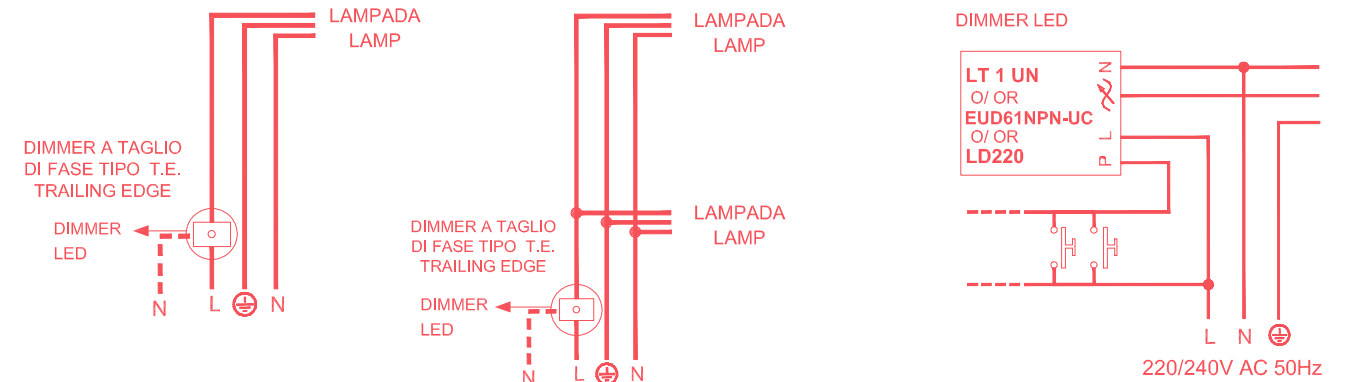
To adjust the light intensity, need to be used DIMMER LED **trailing edge T.E. type**.
 We recommend to use one of the following modules:

Per scatola frutto / For built-in solutions:

- VIMAR: 20135.1, 19135.1, 16559.1, 14135.1
- TECNEL: TE44895BTLED
- B-TICINO: L-N-NT4411N

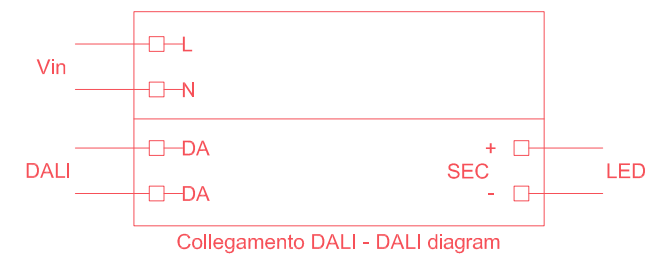
Per scatola di derivazione / For remote electric box:

- RELCO: LT 1 UN - code: RM0540
- ELTAKO: EUD61NPN - UC
- VADSBO: LD 220



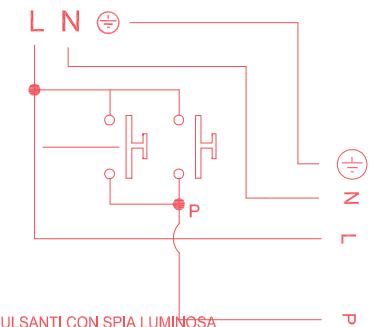
Collegamento DALI - DALI diagramm

ONLY FOR IPE W2



Collegamento PUSH - PUSH diagram

ONLY FOR IPE W2

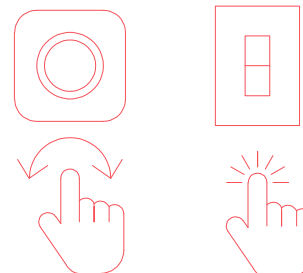


MAX 3 LAMPADE - NON UTILIZZARE PULSANTI CON SPIA LUMINOSA
 MAX 3 LAMPS - DON'T USE PUSH BUTTONS WITH LIGHT INDICATOR

DIM TO WARM (2200°K - 3000° K)



IT: Funziona solo con Dimmer a taglio di fase.
 EN: It operates only with phase-cut dimmer.



MAX INTENSITY
3000°K



MIN INTENSITY
2200°K